

WORKING VOLUME: 12260L
 TOTAL VOLUME: 15400L

CONCRETE: 35 MPa WITH 5-8% AIR ENTRAINMENT
 NON-SULPHATE RESISTANT

REINFORCING: WALLS, FLOOR, AND LID
 10M@ 200mm O/C E/W
 10M BAR DIAGONALS AT EACH CORNER OF LID OPENINGS

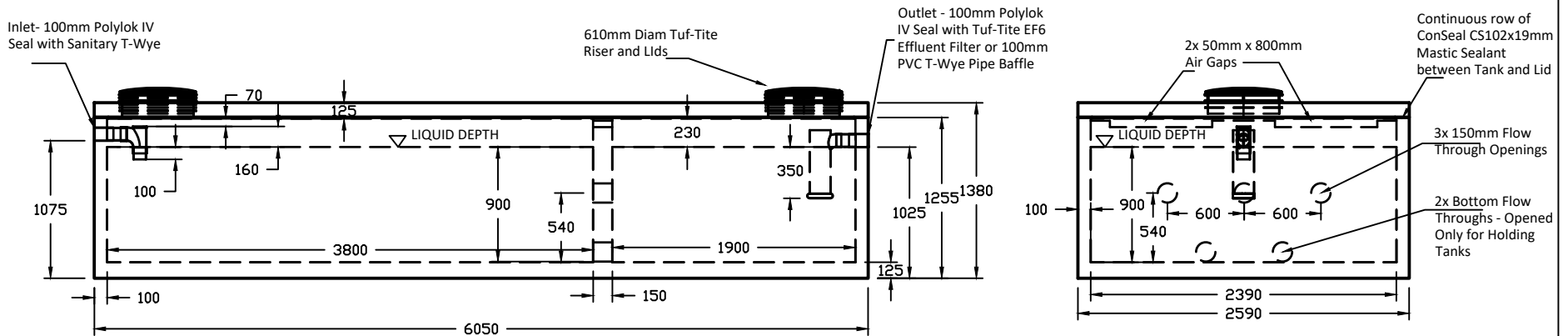
WEIGHT: TOP SECTION: 4700 KGS
 BOTTOM SECTION: 11335 KGS
 TOTAL: 16050 KGS

MAXIMUM BURIAL DEPTH: 1200mm (48")

WATER TIGHTNESS: 1X ROW CON-SEAL CS-102-3/4 MASTIC SEALANT BETWEEN PIECES.
 SEALANT APPLIED ONSITE BY BOYD BROS CONCRETE ACCORDING TO MANUFACTURER'S
 RECOMMENDED METHOD.

PIPE/WALL CONNECTIONS: POLYLOK IV 100mm HIGH PRESSURE SEAL CAST IN CONCRETE

ACCESS OPENINGS: TUF-TITE 610mmx300mm RISER AND LID. ADDITIONAL RISERS
 AVAILABLE. OPSD AND PUMP ACCESS LIDS AVAILABLE.



bb BOYD BROS
 concrete products

BOYD BROTHERS
 5450 CUDDY ST, OSGOOD, ONT, K0A 2W0
 tel (613) 826-2318 fax (613) 826-3679
 toll free 888-846-6664
 website www.boydbrosconcrete.ca
 e-mail info@boydbrosconcrete.ca

PRODUCT		
12200 LB 2-COMPARTMENT SEPTIC TANK		
SERIES NO	MODEL NO	MODELS IN SERIES
BigBlue	12	12, 13, 18, 23, 27, 30, 34, 41
SCALE	REV	DATE
1:1400	5.0	JUNE 14, 2019