

WORKING VOLUME: 23020L
TOTAL VOLUME: 26160L

CONCRETE: 35 MPa WITH 5-8% AIR ENTRAINMENT
NON-SULPHATE RESISTANT

REINFORCING: WALLS, FLOOR, AND LID
10M@ 200mm O/C E/W
10M BAR DIAGONALS AT EACH CORNER OF LID OPENINGS

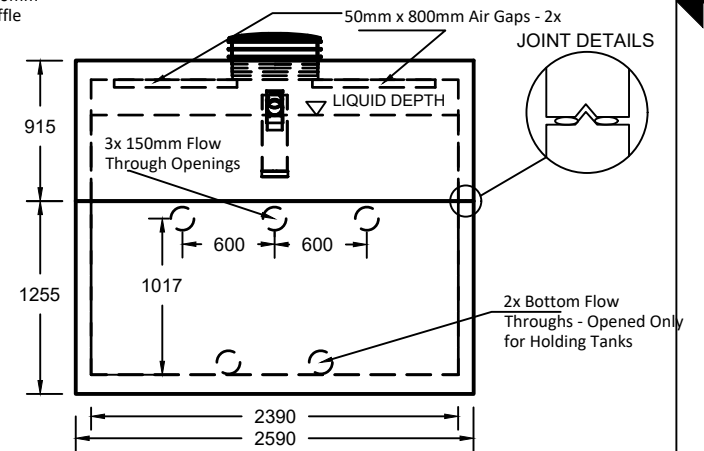
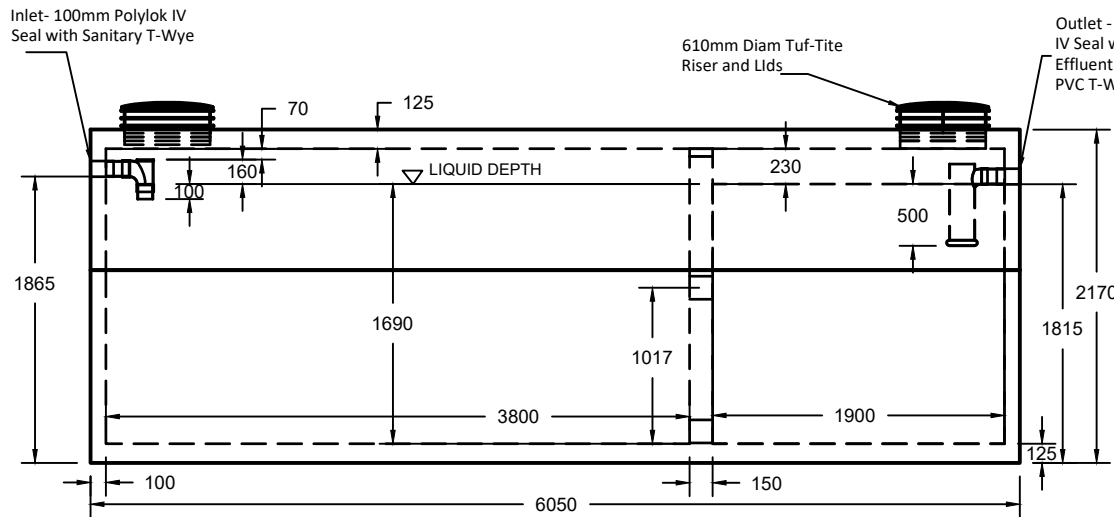
WEIGHT: TOP SECTION: 8100 KGS
BOTTOM SECTION: 11300 KGS
TOTAL 19400 KGS

MAXIMUM BURIAL DEPTH: 1200mm (48")

WATER TIGHTNESS: 2X ROWs CON-SEAL CS-102x 1-3/4 MASTIC SEALANT BETWEEN PIECES. SEALANT APPLIED ONSITE BY BOYD BROS CONCRETE ACCORDING TO MANUFACTURER'S RECOMMENDED METHOD.

PIPE/WALL CONNECTIONS: POLYLOK IV 100mm HIGH PRESSURE SEAL CAST IN CONCRETE

ACCESS OPENINGS: TUF-TITE 610mmx300mm RISER AND LID. ADDITIONAL RISERS AVAILABLE. OPSD AND PUMP ACCESS LIDS AVAILABLE.



bb **boyd bros**
concrete products

BOYD BROTHERS
5450 CUDDY ST, OSGOODE, ONT, K0A 2W0
tel (613) 826-2318 fax (613) 826-3679
toll free 888-846-6664
website www.boydbrosconcrete.ca
e-mail info@boydbrosconcrete.ca

PRODUCT
23000 2-COMPARTMENT SEPTIC TANK

SERIES NO	MODEL NO	MODELS IN SERIES
BigBlue	23	12, 13, 18, 23, 27, 30, 34, 41
SCALE	REV	DATE
1:1400	5.0	JUNE 14, 2019