

WORKING VOLUME: 45700L
 TOTAL VOLUME: 48900L

CONCRETE:
 35MPa w/ 5-8% Air Entrainment
 Non-sulphate resistant

REINFORCING:
 10M bar at 200mm O/C E/W
 10M diagonals at corners of lids

WEIGHT:
 TOP SECTION: 14500kgs
 BOTTOM SECTION: 14500kgs

MAX BURIAL DEPTH: 1200mm

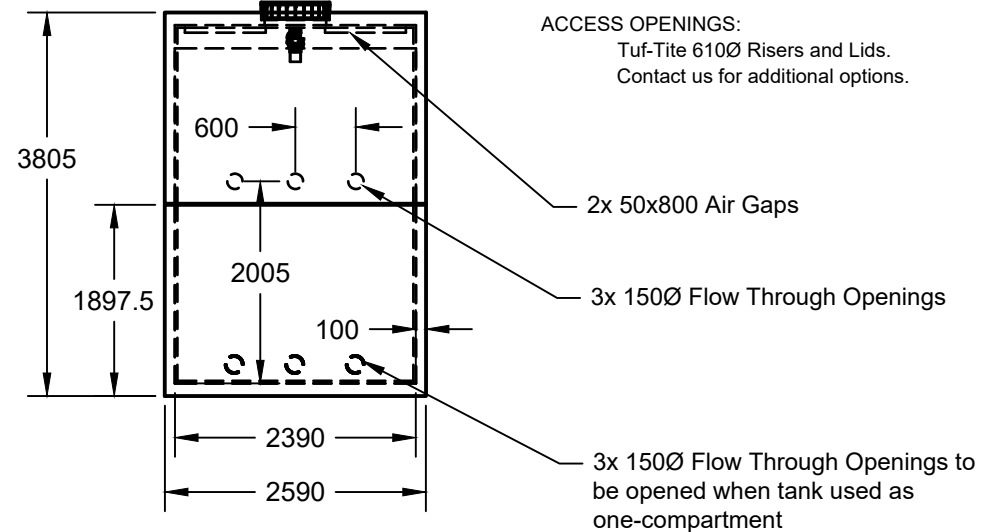
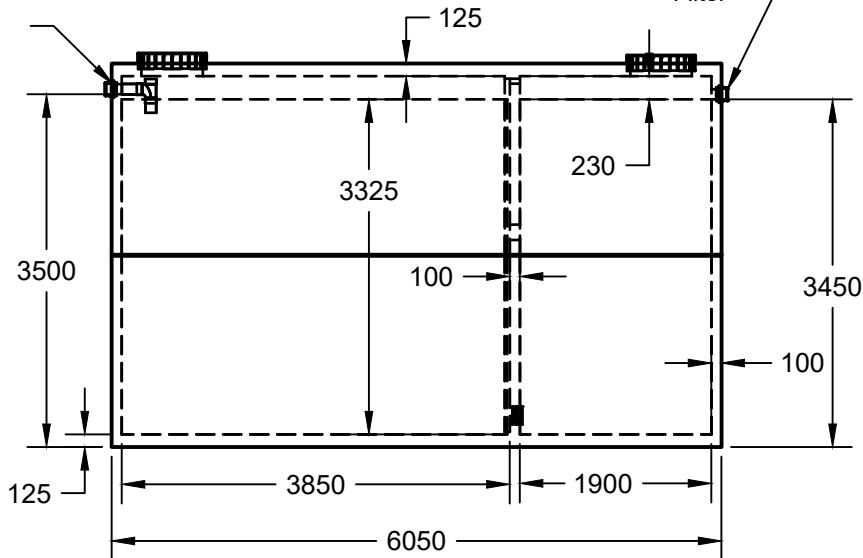
WATER TIGHTNESS:
 2 rows butyl mastic between sections.
 Sealant applied onsite at time of installation
 according to manufacturers recommended
 method.

PIPE / WALL CONNECTIONS:
 100mm flexible watertight rubber seals
 integrally cast in concrete.

ACCESS OPENINGS:
 Tuf-Tite 610Ø Risers and Lids.
 Contact us for additional options.

INLET- 100mm Flexible
 Rubber Seal with Sanitary
 Tee Baffle

OUTLET - 100mm Flexible
 Rubber Seal w/ Effluent
 Filter



2x 50x800 Air Gaps

3x 150Ø Flow Through Openings

3x 150Ø Flow Through Openings to
 be opened when tank used as
 one-compartment

bb BOYD BROS
 concrete products

5450 Cuddy St Osgoode, ON K0A 2W0
 tel (613)826.2318 fax (613)826.3679
 toll free 888.846.6664
 website www.boydbrosconcrete.ca
 email info@boydbrosconcrete.ca

SCALE 1:75

WEIGHT 29000 kgs

APPROVED

DRAWN Rob Sanna 2020-04-05

SIZE

A

DWG NO

1

REV

1

PROJECT

45000L Septic Tank

TITLE

45000L