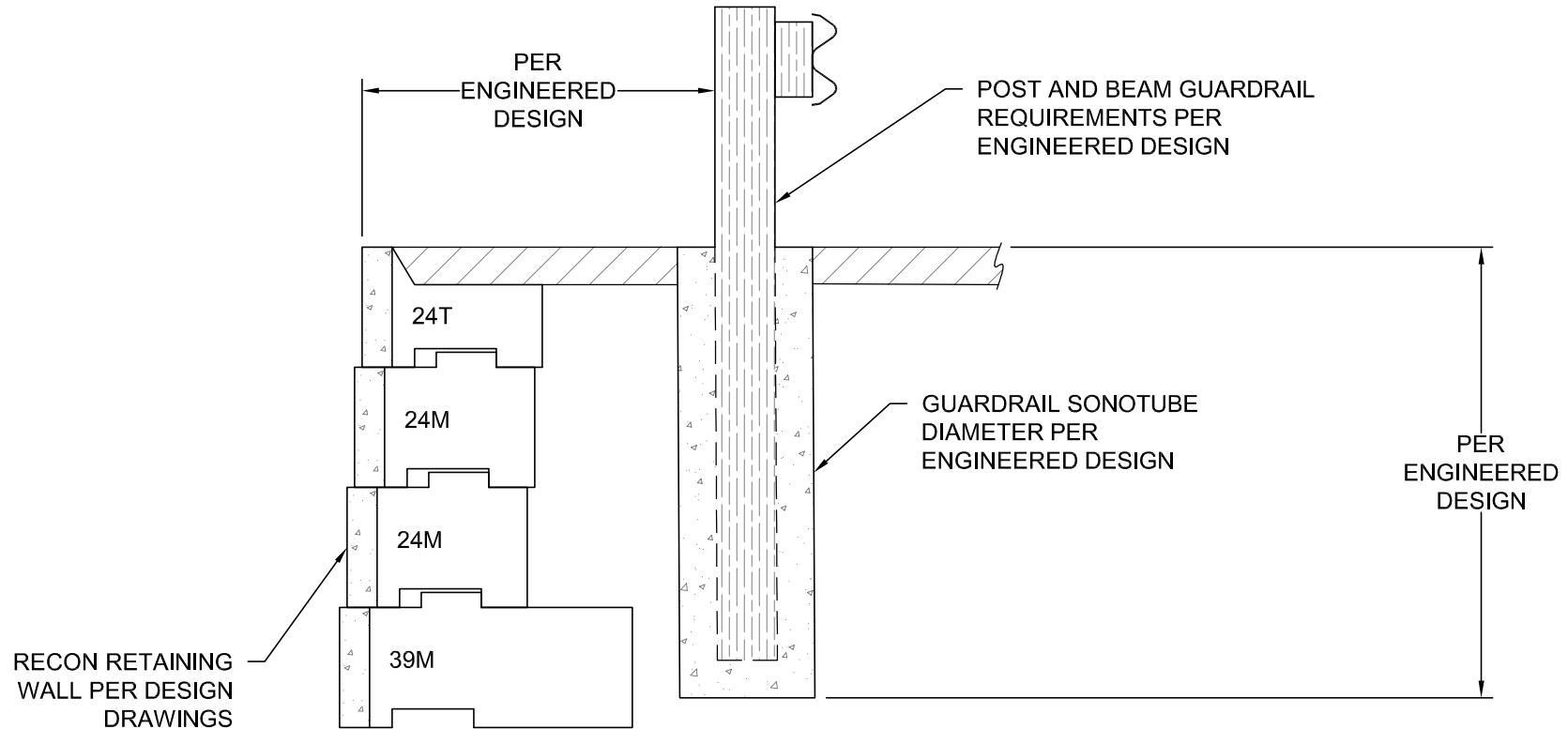


**NOTES:**

1. THIS DRAWING IS INTENDED TO VISUALLY DEPICT SOME OF THE CONSTRUCTION REQUIREMENTS FOR INSTALLING AN INDEPENDENT POST AND BEAM GUARDRAIL SYSTEM AT THE TOP OF A RECON RETAINING WALL. FINAL DESIGN OF THE POST AND BEAM SYSTEM, DEPTH AND DIAMETER OF THE SONOTUBE, AND POST DISTANCE FROM THE FACE OF WALL IS BY OTHERS. IT SHOULD BE NOTED THAT FLEXIBLE POST AND BEAM SYSTEMS SHOULD BE INSTALLED A MINIMUM OF 3' FROM THE FACE OF WALL AND INSTALLED TO A MINIMUM DEPTH OF 5' BELOW GRADE PER THE AASHTO LRFD BRIDGE DESIGN SPECIFICATIONS (2012).
2. ONCE FINAL DESIGN OF THE POST AND BEAM SYSTEM HAS BEEN DETERMINED, WALL DESIGN ENGINEER SHOULD VERIFY THAT THE WALL DESIGN IS CAPABLE OF RESISTING ANY INDUCED LOAD FROM IMPACT ON THE GUARDRAIL.
3. FOR RECON WALLS REQUIRING GEOGRID REINFORCEMENT, CUT GEOGRID AROUND SONOTUBES DURING INSTALLATION. DO NOT AUGER THROUGH GRIDS.



© Copyright 2016 ReCon Wall Systems, Inc. All Rights Reserved

Disclaimer: This drawing has been prepared by ReCon Wall Systems, Inc. and to the best of its knowledge, accurately represents the product use in the application that it is illustrated. This drawing is intended for conceptual purposes only. Anyone making use of this drawing does so at their own risk and assumes all liability for such use. Final design for construction purposes must be completed by a Registered Professional Engineer who is familiar with the product and who has taken into account specific site conditions.

**ReCon**<sup>TM</sup>  
**Retaining Walls**

DRAWING #501

## INDEPENDENT POST AND BEAM GUARDRAIL

RECON WALL SYSTEMS, INC.  
7600 W. 27th STREET, #229  
ST. LOUIS PARK, MN 55426  
952-922-0027  
www.reconwalls.com