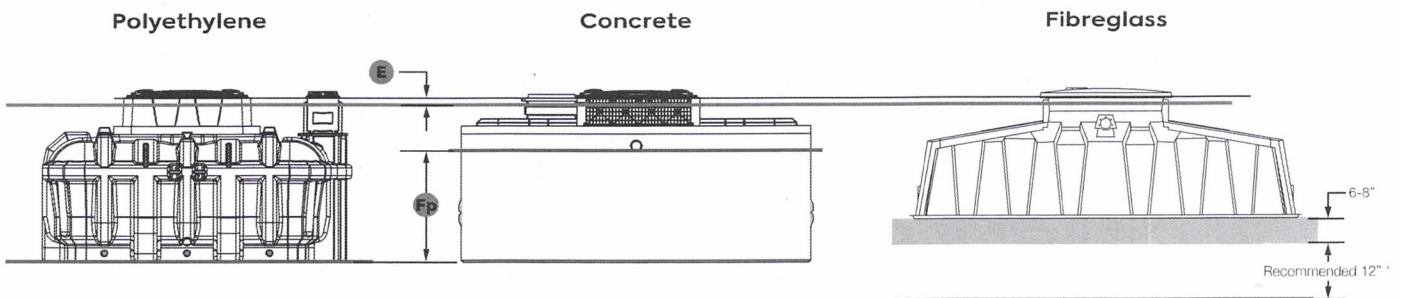
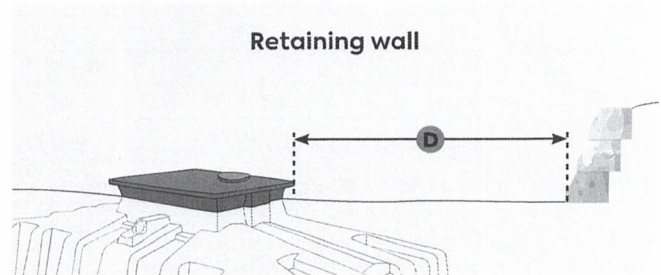
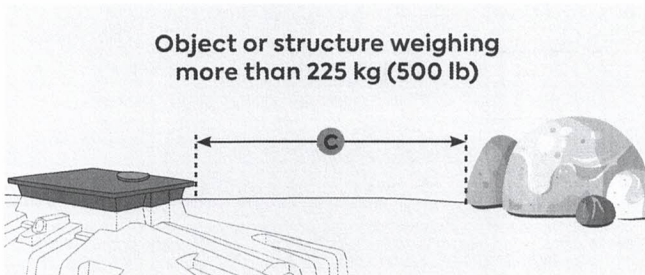
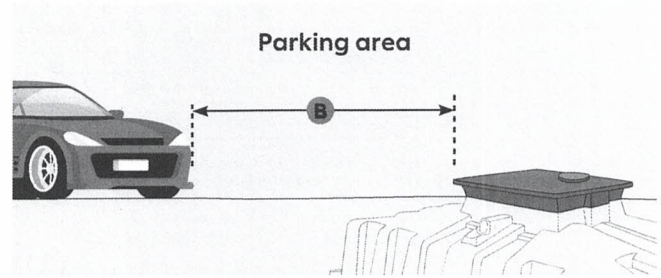
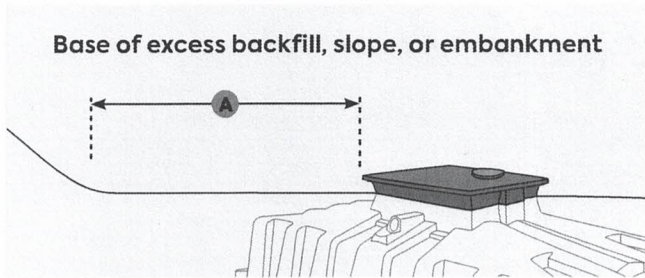


RECOMMENDED DISTANCES

We recommend the following distances guidelines. Failure to abide by these guidelines may void the warranty of the installation.

Reference Points		Polyethylene	Concrete	Fibreglass
Base of excess backfill, slopes, or embankments vs. biofilter lid	A	4 m (13')	3 m (10')	5 m (16')
Parking area vs. biofilter lid	B	4 m (13')	3 m (10')	5 m (16')
Object or structure weighing more than 500 lb (225 kg) vs. biofilter lid	C	4 m (13')	3 m (10')	5 m (16')
Retaining wall vs. biofilter lid	D	4 m (13')	3 m (10')	5 m (16')
Finished landscaping vs. base of biofilter lid	E	50 mm (2")		
Tree vs. biofilter lid		—		3 m (10')
Seasonal high groundwater table (SHGT) vs. base of gravity-discharge unit		Do not install in groundwater		
Seasonal high groundwater table (SHGT) vs. base of pumped-discharge unit	FP	Do not install in groundwater	Up to bottom of inlet pipe	Do not install in groundwater



Legend: — Finished landscaping — SHGT